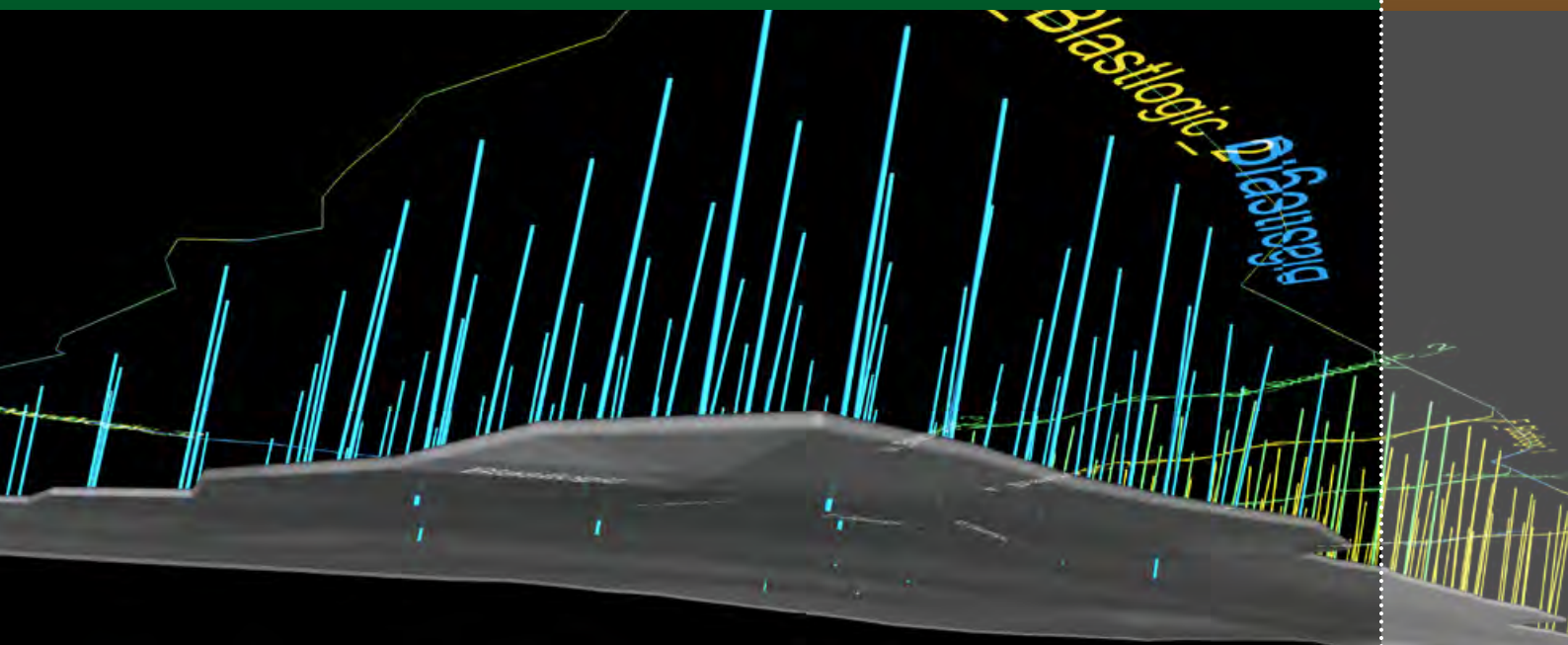




MAPTEK™ BlastLogic™



Precision drill & blast

Design > Validate > Analyse

LOWER RISK, BETTER RESULTS AND GREATER PRODUCTIVITY.

Maptek BlastLogic™ closes the loop on in-pit variations to enhance blast design and optimise performance.

Maptek BlastLogic™ increases drill and blast accuracy by harnessing automated validation and design tools with an intuitive 3D interface.

BlastLogic keeps an historical record of all drilling activity in a single managed location and interfaces with supported third party drill navigation systems.

Superior blast accuracy and performance is achieved through a more intelligent blast design, made possible by fusing the distinct data sets associated with mine planning, drill guidance, field survey, load design parameters and post-blast evaluation.

CONTINUOUS IMPROVEMENT

BlastLogic more effectively preempts risk, productivity and cost issues before they emerge in an operation. This is accomplished by focusing on lead indicators derived from the historical performance of drill and blast events.

The searchable data repository of blasting information drives incremental improvement, as well as the objective learning and explicit transfer of site and operator knowhow.

AUTOMATED FUNCTIONALITY

Collar location and dimensions are updated automatically from drill rig navigation systems or field survey. Dip, backfill and charge sheets are automatically generated.

Ruggedised tablets provide electronic data sharing in the field, extending immediate access to data.

Site defined load design rules are applied across a pattern and can be further refined on a hole-by-hole basis.

SITE SPECIFIC CONFIGURATION

BlastLogic is configured to site specific parameters. Preferred tolerances and thresholds can be established for the automated validation process, while a library of blast products and charge rules can be defined and maintained.

BlastLogic provides a standardised, repeatable and scalable process for single or multiple operations.

EVALUATION

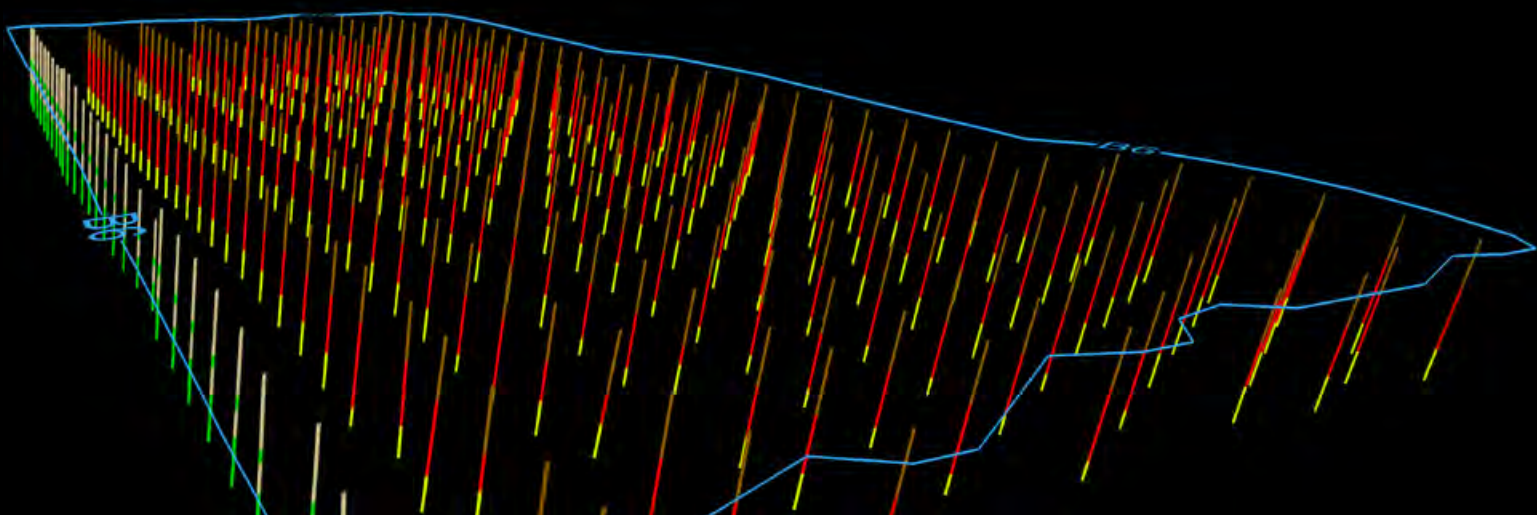
BlastLogic allows for the dynamic quality assurance and quality control of drill & blast activities. Concise compliance, analysis and summary reporting allows users to quantify and track operational and personnel KPIs.

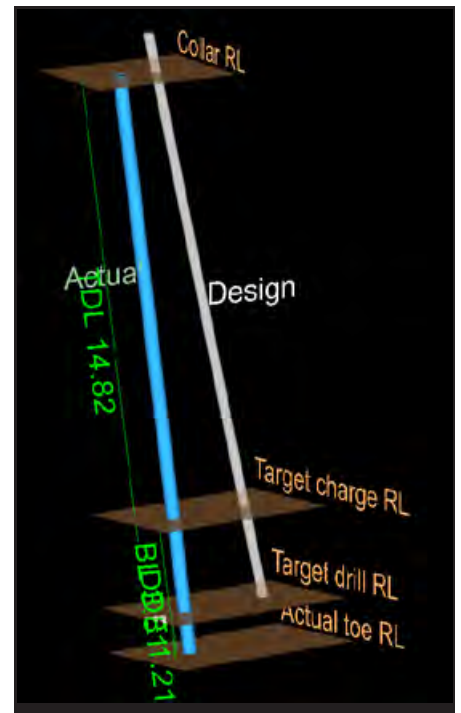
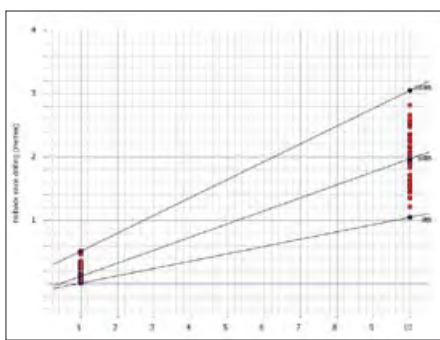
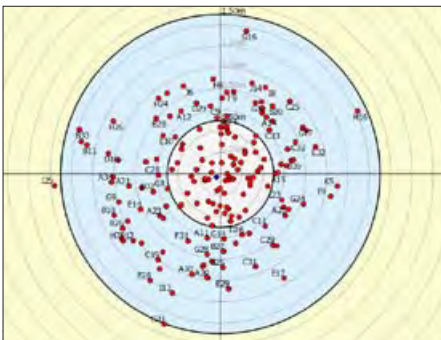
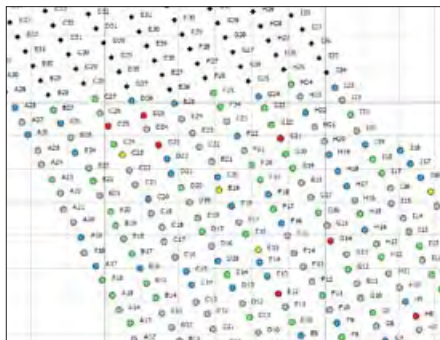
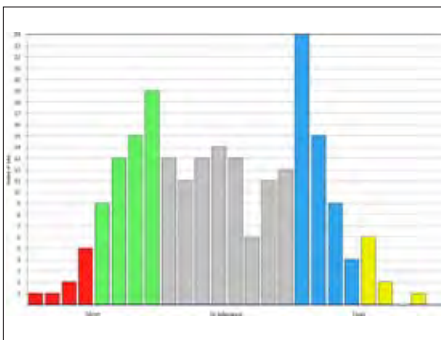
Video, photographs, documents and Maptek I-Site scans associated to a specific blast activity are stored in the BlastLogic SQL server and easily recalled.

MAPTEK BLASTLOGIC

- > Improved drill & blast performance
- > Proactive resource deployment
- > Adapt design to in-pit variations
- > Optimise mineral recovery
- > Effectual downstream processes
- > Objective knowledge sharing

3D DISPLAY OF THE SPATIAL LOCATION OF PATTERNS, SURFACES AND DRILLHOLE CHARACTERISTICS

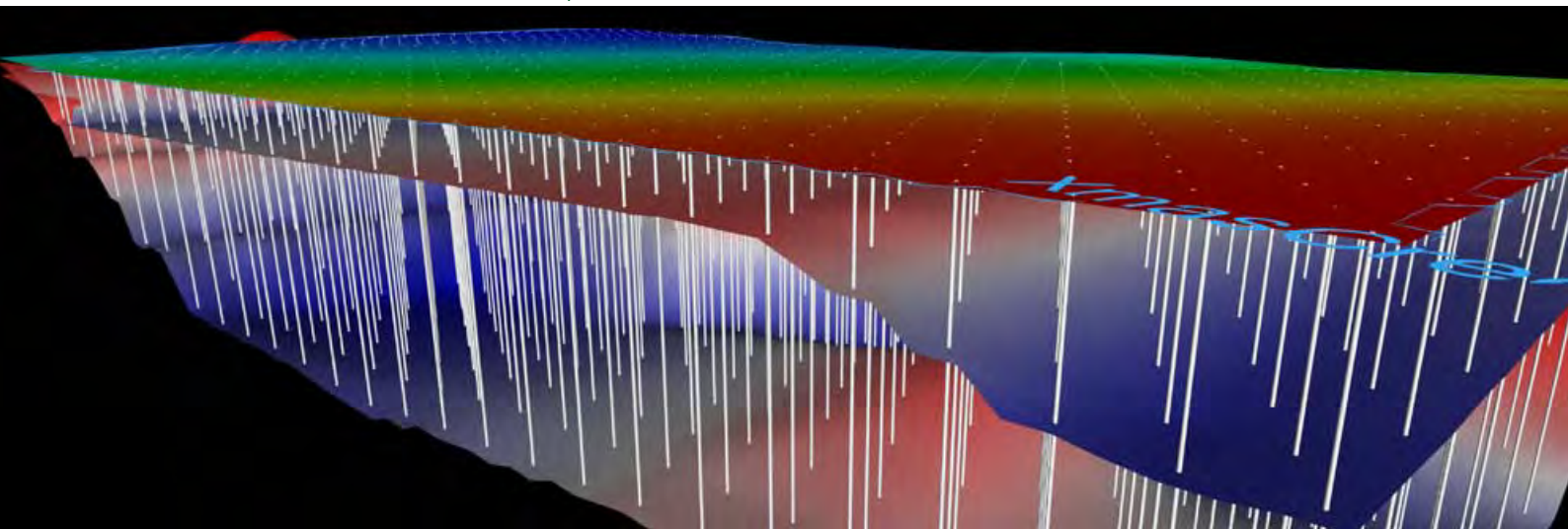




ACCURATE REPORTING
Compliance/Analysis/Summary

AUTOMATED FUNCTIONALITY
Validate as-drilled to plan

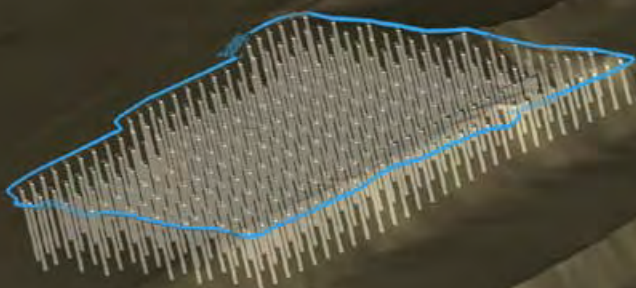
VISUALISATION
Easy to use, easy to view





FEATURES

- > Immediate and simple access to critical data
- > Graphical interpretation of critical data
- > Concise compliance reporting
- > Searchable repository of blast information



> INDUSTRY LEADING GLOBAL SOLUTIONS

Maptek is the leading global provider of innovative software, hardware and services for the mining industry. More than 1200 customers in 60 countries count on Maptek.

Our solutions help reduce operating costs and improve performance, productivity and profitability. Maptek provides expert consulting, training and support services to ensure you get the most from your investment in our products.

ADELAIDE PH: +61 8 8338 9222
BRISBANE PH: +61 7 3316 2800
NEWCASTLE PH: +61 2 4968 7100
PERTH PH: +61 8 6211 0000
SYDNEY PH: +61 2 9957 5554

blastlogic@maptek.com.au
www.maptek.com

Maptek, Vulcan, I-Site, BlastLogic and the stylised M are registered and unregistered trademarks of Maptek Pty Ltd; Maptek Computación Chile Ltda; Maptek Computación Chile Ltda, Sucursal Perú; Maptek S de RL de CV; Maptek Informática do Brasil Ltda and KRJA Systems, Inc. Registered marks are registered in one or more of the following countries: Australia, Brazil, Canada, Chile, China, Greece, India, Indonesia, Mexico, Peru, the Republic of South Africa, Russia, Spain, the UK, and the US.