



**MAPTEK™ I-Site™**



Latest survey technology +  
streamlined workflow

**3D LASER IMAGING TECHNOLOGY**

## Productive Surveying with Laser Scanners

Maptek specialises in the research, development and application of 3D laser scanning technology, with products and services designed to optimise management of many common surveying tasks.

### Maptek I-Site Studio™

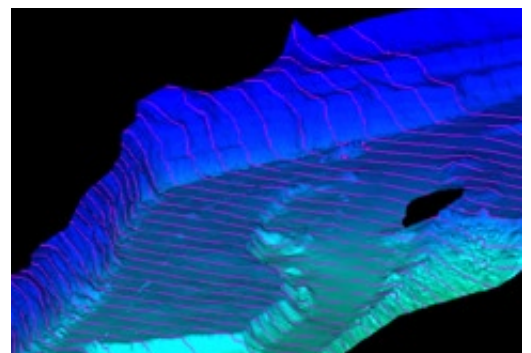
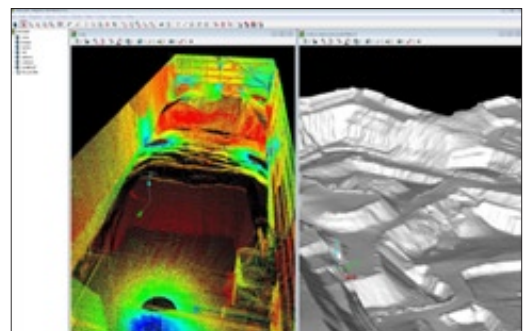
Maptek I-Site™ Studio offers all the tools to successfully apply laser scanning to survey tasks within the mining and engineering industries. Our software improves efficiency, productivity and workflow in any operation.

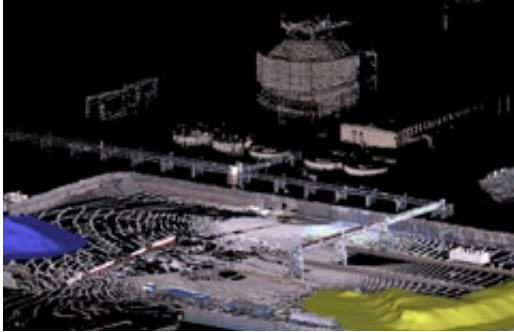
I-Site Studio integrates data from high performance laser scanning instruments with conventional survey and mapping. It allows you to use data from various scanners, and even combine data from different sources.

A powerful 3D graphics interface, colour and intensity data display, and easy to use Windows™ style data browser complete a single software package to help you get maximum benefit from laser scan data.

General software features include

- High resolution images of data
- Animation files (.avi format)
- Repeated acquisition and averaging to improve data accuracy
- Fully interactive rotation, zoom and pan of view
- Operates on 32 and 64-bit versions of Windows XP and Vista





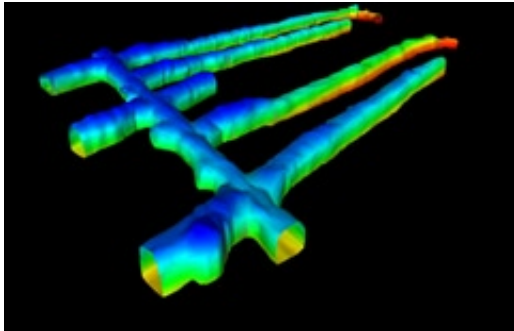
## Maptek I-Site™ 4400CR

The I-Site 4400CR is an advanced multi-sensor laser scanner, with a range of up to 350 metres. Survey registration of multiple scans is a fully automatic process using existing underground survey setups. Software tools allow non-surveyed scans to be registered quickly and easily. This makes for a surveyor friendly instrument.

The combined laser scanning and imaging system, with built-in high resolution panoramic digital camera and range-finder, is ideal for surveying in underground mines, tunnels and caves, as well as enclosed silos and sheds. A red laser pointer is included for underground or tunnel work.

General features include

- Range from 2 metres to 350 metres
- Dedicated hand-held controller, no external laptop required
- Scanning extent of 80° vertical and 360° horizontal
- 37 megapixel built in panoramic digital camera
- Automatic survey registration of multiple setups



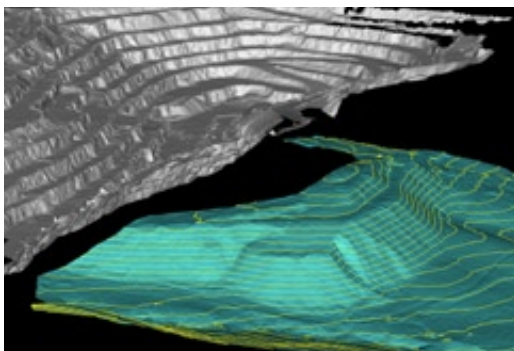
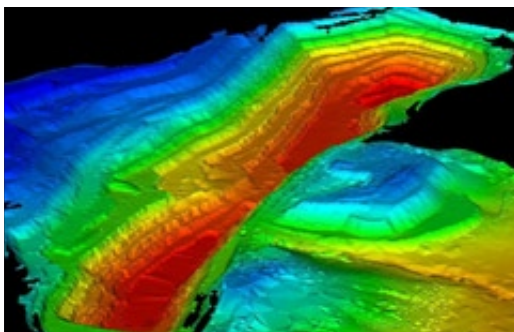
## Maptek I-Site™ 4400LR

The I-Site 4400LR is an advanced multi-sensor laser scanner with a range of up to 700 metres. A motorised, survey quality telescope is built into the instrument housing for backsighting. Instrument tilt is automatically corrected by a built-in digital level compensator.

The I-Site 4400LR can be set up over a known coordinate and backsighted to within 20 arcseconds. Setup, backsight coordinates and instrument height are stored with the scan data, so the scan is always located in the correct coordinate system.

General features include

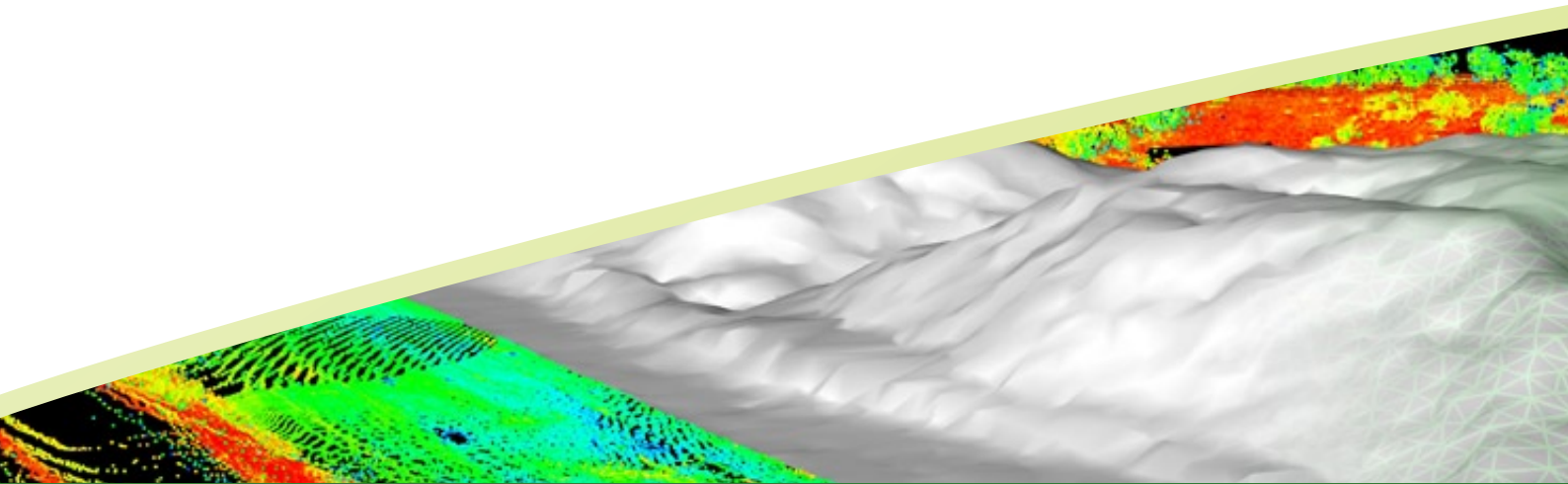
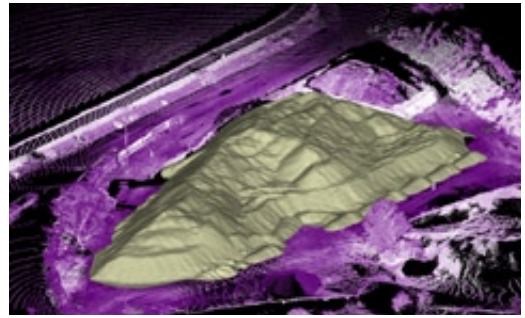
- Range up to 700 metres
- Built-in survey grade alignment telescope for backsighting
- Can be mounted vertically or horizontally - ideal for scanning in silos, sheds
- 37 megapixel in-built panoramic digital camera. Image texturing is automatic, requires no user calibration or alignment
- Rapid registration of multiple setups gives greater coverage than other long range scanners from one setup



## Maptek I-Site Services

All I-Site packages come with

- **Training and installation**  
Packages include all site or office training to ensure the technology can be used to its full advantage
- **Hardware and software maintenance program**  
All upgrades, servicing, calibration and certification of the hardware and software is provided for the first 12 months



Belo Horizonte	55 31 3224 4888
Lima	51 1 476 0077
Viña del Mar	56 32 269 0683
Cancún	52 998 892 0030
Denver	1 303 763 4919
Edinburgh	44 131 225 8447
Johannesburg	27 11 918 0829

Adelaide	61 8 8338 9222
Brisbane	61 7 3316 2800
Newcastle	61 2 4968 7100
Perth	61 8 6211 0000
Sydney	61 2 9957 5554

[info@maptek.com](mailto:info@maptek.com)  
[www.maptek.com](http://www.maptek.com)

Maptek, Vulcan, I-Site, and MineSuite are registered and unregistered trademarks of Maptek Pty Ltd; Maptek Computación Chile Ltda; Maptek Computación Chile Ltda, Sucursal Perú; Maptek S de RL de CV; Maptek Informática do Brasil Ltda and KRJA Systems, Inc. Registered marks are registered in one or more of the following countries: Australia, Brazil, Canada, Chile, Greece, Mexico, Peru, Russia, Spain, the UK and USA.