

## Vehicle Mount System for Mobile Scanning

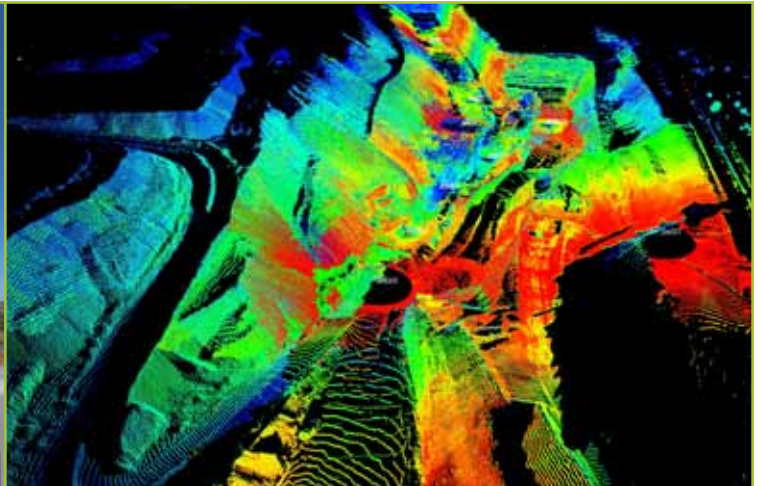
A new vehicle mount allows Maptek™ I-Site™ laser scanners to be mounted and transported on common site survey vehicles, saving time and improving safety.

### I-Site 8800 Features

- Survey location via on-site GPS
- Software tools for auto-registration and backsighting
- Built-in compensator used for levelling

### Advantages of the Vehicle Mount

- Increased versatility ideal for limited survey crews
- Ruggedised industrial design absorbs vibration
- Stop-Go scanning saves time, eliminates tripod setup and provides better coverage
- Improved line-of-sight for topography scanning and scene coverage over undulating ground
- Enhanced site occupational health and safety



The ruggedised, shock absorbing mount which attaches an I-Site 8800 scanner to existing site vehicles adds an extra dimension to the already super-portable survey instrument.

The vehicle mount system dramatically increases the efficiency of site survey applications and improves health and safety outcomes.

The mount can be left on the vehicle permanently, while the built-in 'quick-connect' power and LAN adapter, combined with a quick release mechanism, allow the scanner to be easily removed for safe storage.

International trials have proven the flexibility and portability of the system. It takes about 30 minutes for Maptek technical staff to install the vehicle mount system, including roof racks, on regular site survey vehicles. This all takes place on site for maximum convenience.

There is no need to use specially prepared vehicles, so labour-intensive fabrication is eliminated. A bigger pool of vehicles can be called on, and downtime is minimal when swapping between different vehicles on site.

The vehicle mount system reduces the need to walk over dangerous ground, and limits the scanner carry time, addressing site occupational health and safety issues.

The vehicle mount system for the I-Site 8800 improves site performance. Large areas can be covered in significantly less time, equipment costs are reduced and survey practices are safer streamlined.

*The vehicle mount system is another Maptek product made with the user in mind.*



**MAPTEK SAVED US 3 DAYS IN SCANNING THE PIT AND ROM PAD. WE WOULD NEVER HAVE BEEN ABLE TO ACCOMPLISH THIS WITHOUT THE SCANNER AND ROOF MOUNTING SYSTEM.'**

*Ric Lester, Surveying Superintendent  
Fortescue Metals Group*

**ARRANGE A DEMO NOW!**

**EMAIL [isite.sales@maptek.com.au](mailto:isite.sales@maptek.com.au)**

## Vehicle Mount System for Mobile Scanning

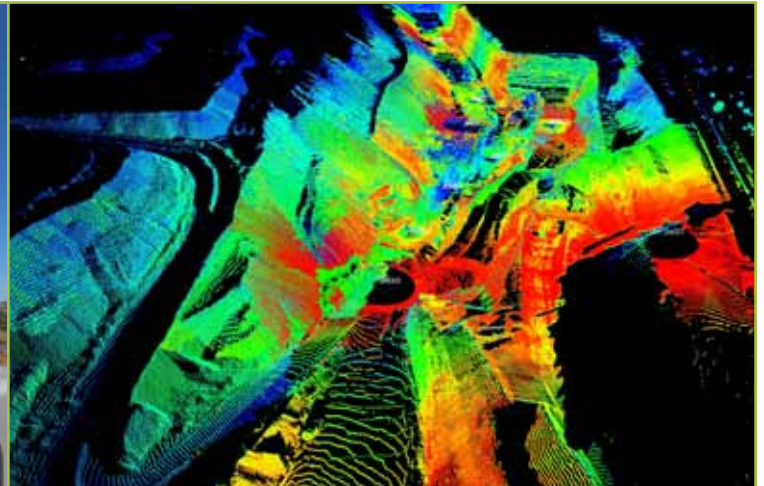
A new vehicle mount allows Maptek™ I-Site™ laser scanners to be mounted and transported on common site survey vehicles, saving time and improving safety.

### I-Site 8800 Features

- Survey location via on-site GPS
- Software tools for auto-registration and backsighting
- Built-in compensator used for levelling

### Advantages of the Vehicle Mount

- Increased versatility ideal for limited survey crews
- Ruggedised industrial design absorbs vibration
- Stop-Go scanning saves time, eliminates tripod setup and provides better coverage
- Improved line-of-sight for topography scanning and scene coverage over undulating ground
- Enhanced site occupational health and safety



The ruggedised, shock absorbing mount which attaches an I-Site 8800 scanner to existing site vehicles adds an extra dimension to the already super-portable survey instrument.

The vehicle mount system dramatically increases the efficiency of site survey applications and improves health and safety outcomes.

The mount can be left on the vehicle permanently, while the built-in 'quick-connect' power and LAN adapter, combined with a quick release mechanism, allow the scanner to be easily removed for safe storage.

International trials have proven the flexibility and portability of the system. It takes about 30 minutes for Maptek technical staff to install the vehicle mount system, including roof racks, on regular site survey vehicles. This all takes place on site for maximum convenience.

There is no need to use specially prepared vehicles, so labour-intensive fabrication is eliminated. A bigger pool of vehicles can be called on, and downtime is minimal when swapping between different vehicles on site.

The vehicle mount system reduces the need to walk over dangerous ground, and limits the scanner carry time, addressing site occupational health and safety issues.

The vehicle mount system for the I-Site 8800 improves site performance. Large areas can be covered in significantly less time, equipment costs are reduced and survey practices are safer streamlined.

*The vehicle mount system is another Maptek product made with the user in mind.*



**MAPTEK SAVED US 3 DAYS IN SCANNING THE PIT AND ROM PAD. WE WOULD NEVER HAVE BEEN ABLE TO ACCOMPLISH THIS WITHOUT THE SCANNER AND ROOF MOUNTING SYSTEM.'**

*Ric Lester, Surveying Superintendent  
Fortescue Metals Group*

**ARRANGE A DEMO NOW!**

**EMAIL [isite.sales@maptek.com.au](mailto:isite.sales@maptek.com.au)**