

### FREEHAND MANIPULATION TOOL

- > A new toolbar button on the transform toolbar allows objects to be dynamically moved freehand.
- > Movement can be achieved by clicking on a direction to translate or rotate, and by holding the middle mouse to move the data. This is particularly useful in initial manipulation of scans for rough alignment prior to registration. *(above)*

### PREFERENCES VIEW

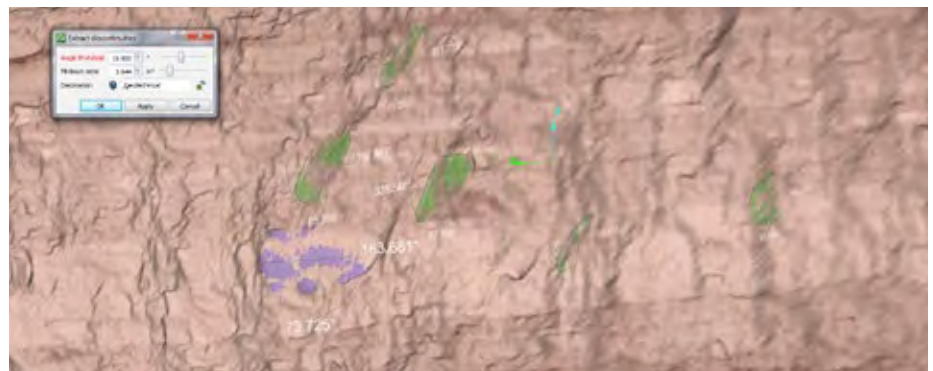
- > Users can set their preferences for allocation of the mouse functionality, such as wheel action during zooming.

### ADJUST IMAGE CONTROL

- > A new colour menu feature enables users to adjust the graphics quality of an image that has been superimposed onto a surface. Hue, saturation, lightness and contrast are now individually adjustable.

### GEOTECHNICAL FEATURE EXTRACTION

- > A new geotechnical menu item enables users to identify individual regions containing planes of interest.
- > Users can then automatically highlight and select all similar planar regions over the entire surface/area of interest.
- > For example, select one fault plane and I-Site Studio will automatically identify all others in the view that meet the selection criteria. *(below)*



## IMPROVED

### ANIMATION TOOL

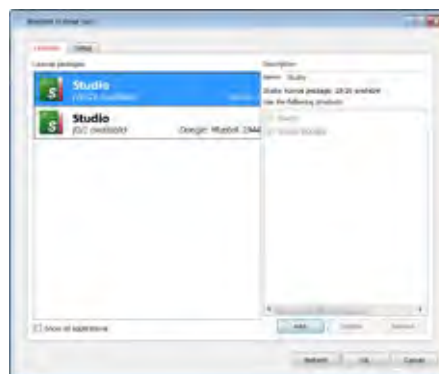
- > It is now possible to create and edit animation keyframes in a timeline. The speed of the animation can be adjusted by dynamically moving the keyframes.

### LICENSING

- > A new license tool enables users to hotswap floating licenses. *(right)*

### COLOUR LEGENDS (MAPS)

- > Colour by distance from objects, and analyse surface change by colour tools, make changes and distances easily identifiable onscreen.



### SMART LINE TO WORK ON IMAGERY

- > The smart line option can now be used from the Create menu to trace ore boundaries or coal intercepts.
- > A detailed line can be created directly onto a scanned photograph or the intensity surface. *(below)*
- > The line can be smoothed to the level of detail required using another tool.

