

NEW IN I-SITE STUDIO 5.0

Maptek™ I-Site™ Studio 5.0 delivers new features and improvements to existing software tools to further boost survey efficiency and productivity.

WORKING WITH LARGE DATA

I-Site Studio 5.0 introduces new capability for quick and easy viewing of large datasets.

Applying a Level of Detail (LOD) to the data allows a manageable amount of data to be loaded and viewed at one time.

WORKFLOW MANAGER

A new Workflow manager allows users to create their own workflows for routine survey tasks. A series of transactions can be shared and adapted within survey teams. Launching from custom toolbars saves time on data processing and analysis. The status of the current process is conveniently highlighted.

GLOBAL REGISTRATION

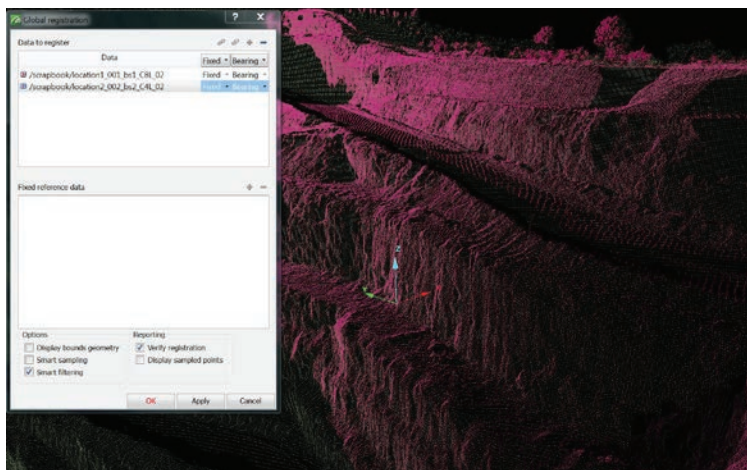
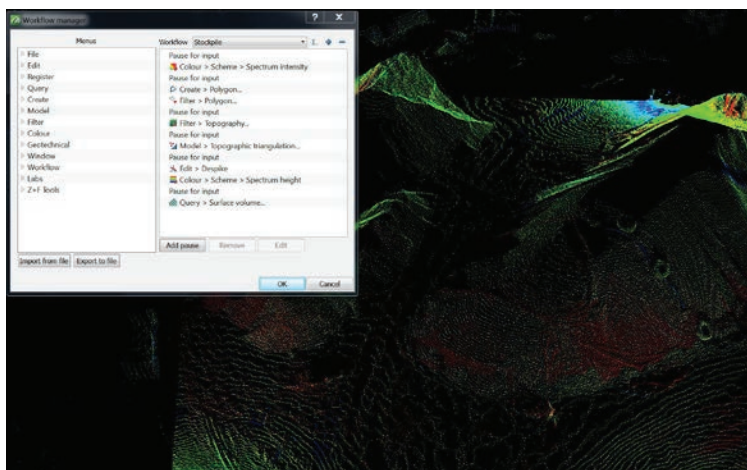
The Global registration interface has been streamlined and smart sampling has been introduced. Tolerance ellipsoids can be set and viewed for each scan.

The point pairs used in registration are displayed and registration progress is updated dynamically.

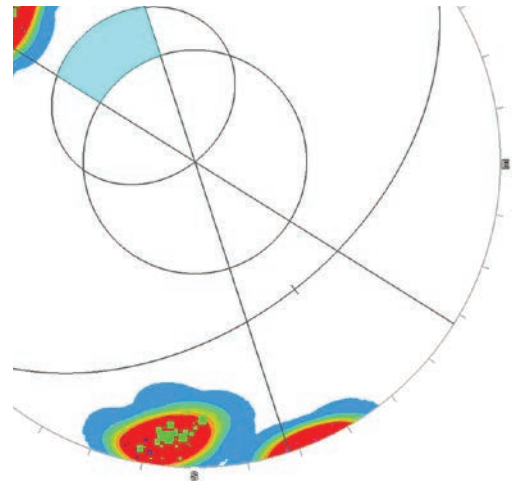
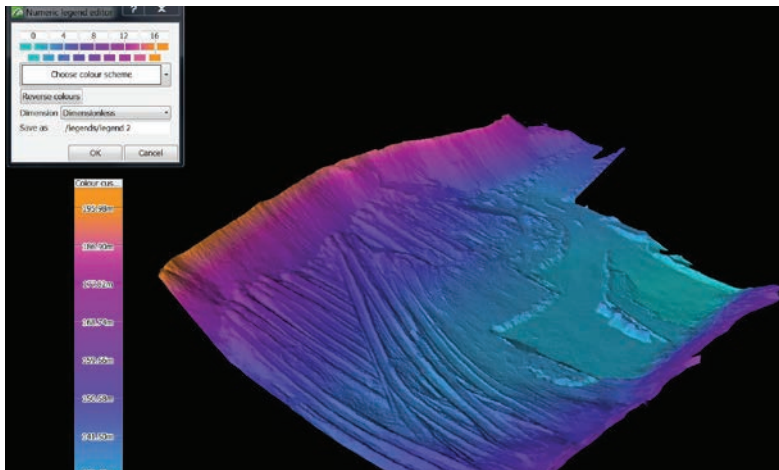
Multiple scans from the same location can be moved together as a group. It is now possible to register two scans unlevelled, but constrained to a GPS point.

IMAGE RENDERING

A 360° panoramic image captured with any digital device can be rendered on an I-Site point cloud. Improved standard rendering now allows up to 7 images to be rendered to a single surface.



I-SITE LASER IMAGING TECHNOLOGY INCLUDES EASY SETUP AND USE, FEATURING FAMILIAR WORKFLOW AND INTEGRATION WITH SITE SURVEY PRACTICES.



GEOTECHNICAL MODULE

Additions to the Geotechnical module allow easier analysis of different failure modes and more intuitive display of results. Discontinuities can be exported in .csv and Vulcan™-specific formats.

A maximum discontinuity area can now be specified in the Extract discontinuities tool. A Kinematic analysis option allows analysis for potential failure types such as wedge, planar and toppling.

Stereonet display improvements include type, grid style and scalable pole size. The great circle tool now automatically populates from a stereonet selection.

I-SITE STUDIO SOFTWARE BRINGS OUT THE REAL VALUE IN THE SCAN DATA, WITH SUPERB ACCURACY AND FLEXIBLE REPORTING.

FILTERING DATA

The new vegetation filter includes a wizard-style interface, with an option to remove objects above evenly distributed low points in a selection. A distance from ground slider dynamically updates the view of points to be removed.

Data imported from I-Site 8000 series laser scans can be automatically filtered for dust or other spurious points. A new filter surface tool allows users to choose to retain points above or below a surface.

OTHER ENHANCEMENTS

The Combination surface tool allows a new surface to be outside the original surface. This is often necessary when mining operations expand. The function does not require completely closed intersections between surfaces to generate a new solid.

Import/export options are expanded to .e57 and .las files, with a new Maptek file format supporting transfer of objects or groups of objects between Maptek applications.

Other enhancements include creating default legends for colouring objects; saving views and preferences; more flexible licence borrowing; and additional reporting formats.

For more information please email isite.sales@maptek.com.au

