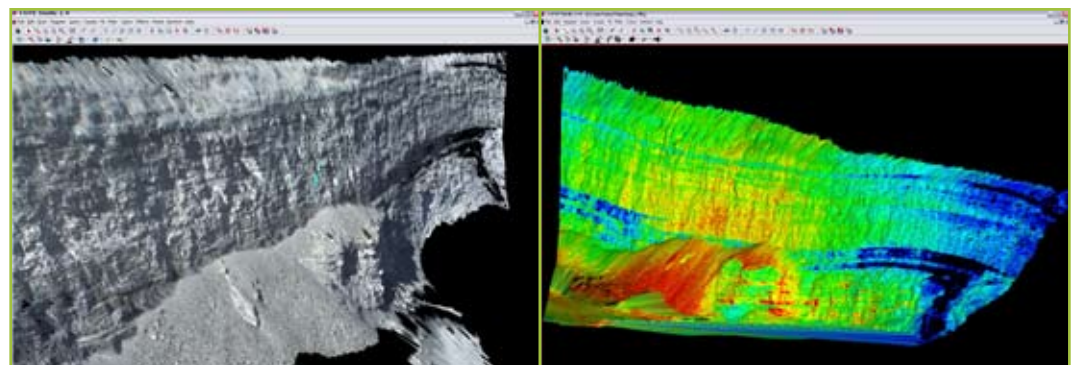


Maptek targets highwall mapping for mine geology applications

Maptek I-Site™ tackles routine survey applications efficiently. I-Site 4400 scanners are versatile systems being used by many mine sites for general surveying tasks as well as complex and specific applications.



Highwall scan showing image captured simultaneously and rendered onto 3D points (left); and by intensity only (right)

HIGHLIGHTS

- Scan highwalls safely and easily, while capturing the detail needed for mapping
- Detailed and accurate models within minutes
- Digitising on 3D image on the screen saves time

I-Site 4400 laser scanning systems are ideal for all surveying applications.

The integrated high-resolution digital panoramic camera allows geologists to accurately map, model and interrogate geological structures – with speed and safety in mind.

I-Site scanners have been designed to optimise management of many common mine surveying, engineering and geological tasks.

I-Site instruments are surveyor-friendly, and include an in-built digital level compensator and ease of set up over known mine coordinates, with backsighting to within 20 arcseconds.

Scans can be located automatically onto the system's hand-held controller, removing the need to post-process data in the office.

A detailed and accurate model of a pit, stockpile or development face is available within minutes.

Scanning a highwall, development face or pit wall provides geologists with

an extremely detailed and truly three-dimensional image of their mine.

In addition, I-Site is the easiest, fastest and safest method to use for acquiring and displaying the data.

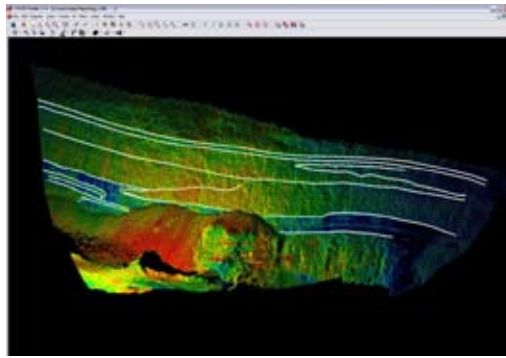
A single scan of a highwall can generally be undertaken in less than 5 minutes, and at the same time as performing routine daily or end of month surveys.

A high-resolution I-Site scan provides an intensity image over which it is possible to render a 37 megapixel image by simply right clicking the mouse.

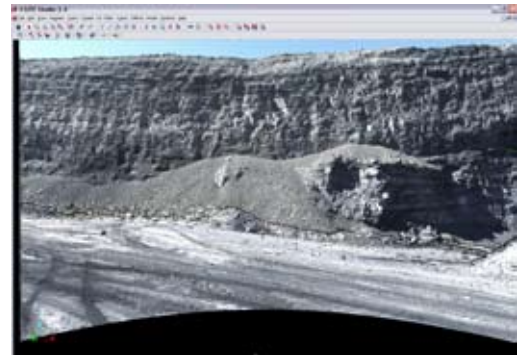
Because I-Site laser systems combine a laser scanner with high-resolution panoramic digital imaging, they scan and photograph at the same time.

Unlike methods that only colour individual points based on a photograph, I-Site instruments use all of the pixel information to render onto a 3D point cloud.

With I-Site, there is no need to calibrate and align cameras to capture images.



Digitising on the 3D image saves time



Fully rendered photograph in 'view scan mode'

TESTIMONIAL

I-Site 4400 laser imaging systems are packed with features to suit all surveyors.

The system is sold as a package, including all associated software, hand-held controller, maintenance and training.

Geologists can digitise boundaries, structures and other features directly onto a 3D image in true local grid coordinates without any interpolation from 2D to 3D.

A simple mouse click will generate a detailed 3D model from the point cloud for geotechnical interrogation of fault planes or joint sets.

Points, polygons or lines can be created directly onto the 3D model for accurate calculation of dips and strikes.

The 3D CAD drawings can be exported and combined with other geological information in external databases.