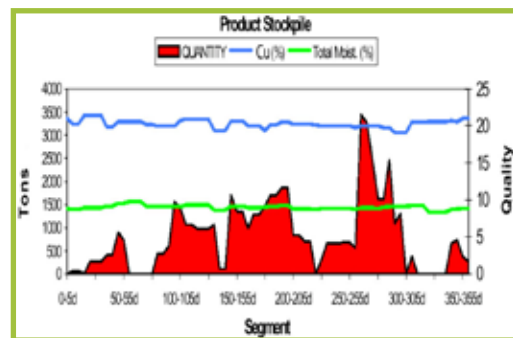


Recycling for the future

The concern for making the most of the world's finite raw resources has led to renewed focus on recycling materials. Maptek MineSuite™ is proving a boon to operators in tracking their stockpile inventories in real time.

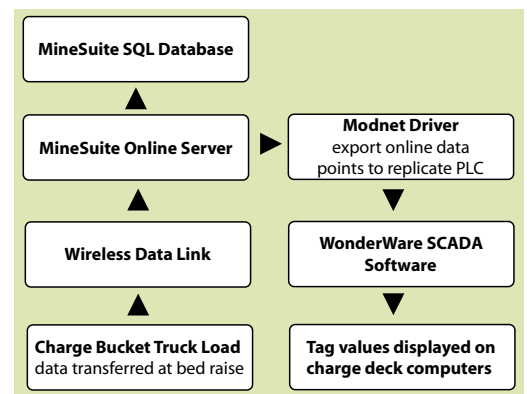


Contracting companies who have become suppliers and handlers of recycled materials to steel producers commonly keep large inventories of scrap metals on site in the form of material stockpiles.

The size of these stockpiles, and the constant addition and subtraction of materials, make it more difficult to maintain accurate records of inventories day-to-day.

MineSuite can track onsite stockpile inventory in real time, improving the accuracy. The added advantage is being able to run detailed inventory reports as well as reconcile the stockpiles daily if needed.

The export of real time information has two benefits. The first is to the steel making personnel on the melt deck. MineSuite's real time calculation module allows the operators to change the steel making recipe in real time and maintain accuracies to the ton.

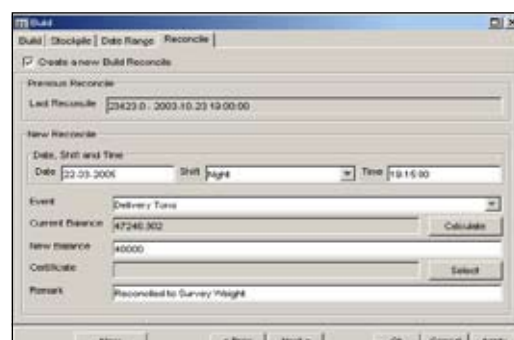


The second benefit is that MineSuite information can be fed into the plant for regression analysis, tracking high and low copper deposits in the stockpiles.

Based on these regression analyses, the steel making process can be refined even further by allowing personnel to select different stockpiles of material for different types of steel.

HIGHLIGHTS

- MineSuite allows accurate records of stockpiles to be kept
- Records kept in real time
- Added advantage of being able to run detailed inventory reports



MineSuite reconcile panel