



Field design conformance

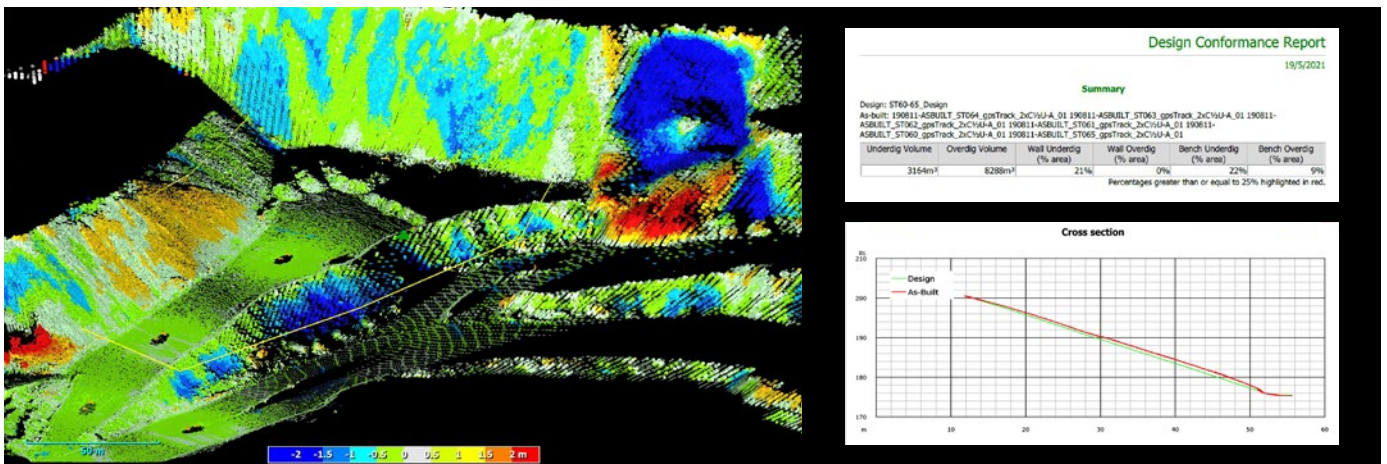
Intuitive tools improve safety and productivity

Maptek™ provides an easy to use tool for rapidly evaluating and supporting design conformance. Quickly compare laser scans to designs in real time for integrated decision support.

The latest Design Conformance add-on to Maptek FieldHHC helps users instantly recognise in the field whether pit walls are conforming to design. Issues can be resolved more quickly rather than waiting for office processing. Dynamic reporting and cross section output means everyone stays up to date and production can continue uninterrupted.

The system streamlines communication between planning, design and production teams for improving wall stability and understanding wall conformance to support decision making. Using point cloud data allows users to check conformance between a design surface and actual scanned scenes instantly in the field with their Maptek 3D laser scanner.

Laser scans coloured based on their distance to the design enable immediate, intuitive understanding of what's happening in the field. Reports are quickly generated for distribution across the organisation.



Improve productivity

Monitor conformance of scans to design in real time in the field

Increase safety

Improve wall stability with flow on benefits for highwall and bench safety

Decision support

Ensure planning, design and production are working off accurate, current data

Benefits

Support production goals through an intuitive field process that delivers immediate and accurate conformance data.

- Actively monitor conformance without interrupting production
- Conduct in-field conformance directly from laser scans
- Report on underdig/overdig volumes, distance to design for reconciliation
- Increase highwall, bench safety with improved wall stability

Features and capabilities

Visualise areas of non-conformance and report to planning and production teams for improving resource recovery.

- View conformance to designs in the field
- Obtain instant conformance from the same scanning solution used for pit updates and stockpile volumes
- Measure distance to design, from scan origin and conduct cross-section queries
- Import threshold legends for custom colouring of conformance levels