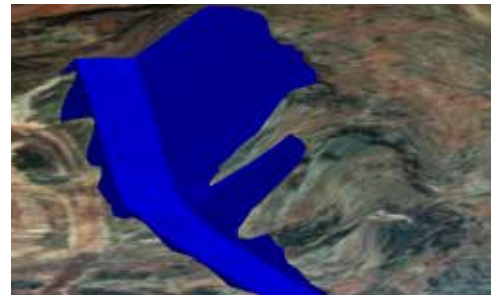
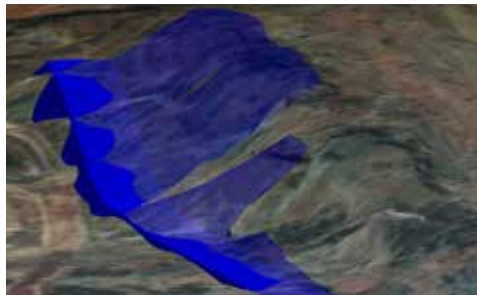


INTERACTIVE ROAD DESIGN

Interactive Road Design (Iroad) in Vulcan helps plan, design and construct road systems. With a few clicks of a mouse button you can design a road with balanced cut and fill.



HOW DOES IT WORK?

INPUT

Iroad designs a road from a digitised line in Vulcan. The software takes into account your specifications as well as the terrain on which the road will lie.

Data input includes:

- > Different sub-surfaces to optimise excavation
- > Topography wireframe to ensure cut and fill considers existing topography

OUTPUT

Iroad produces the road alignment and reports on the earthworks required to build the road.

Reports include:

- > Multiple plotting options
- > Plan view
- > Horizontal alignments
- > Vertical alignments
- > Cross-section intervals
- > Chainage volumes
- > Cut and fill volumes

YOUR QUESTIONS ANSWERED

How much setup work is required?

Simply digitise a line and a design is generated showing balanced cut and fill.

Can I use Iroad to design in-pit ramps?

Yes. Iroad is ideal for in-pit ramps and provides a comprehensive report for necessary earthworks.

Can I take into account material swell factor?

Yes. The bulking option allows you to set a default bulking factor to be used in the cut and fill volume calculations.

Can I view the road from the perspective of the vehicle?

Yes. The animation feature allows you to view the road from the perspective of the vehicle.